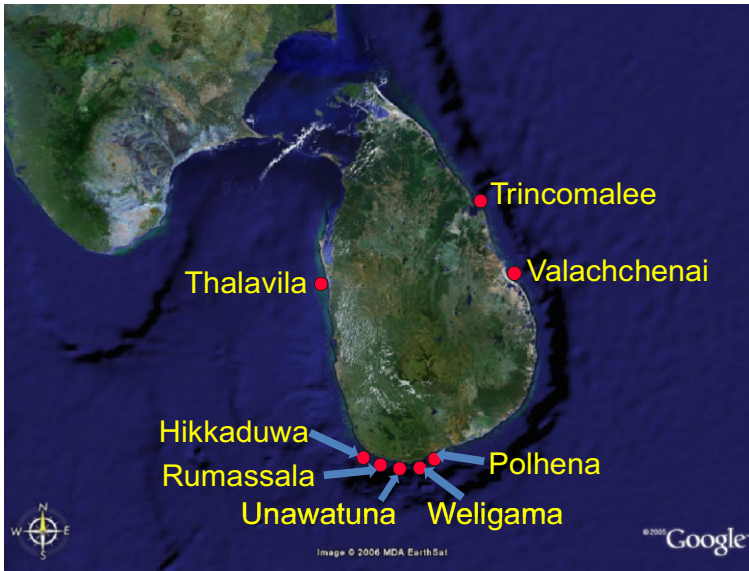
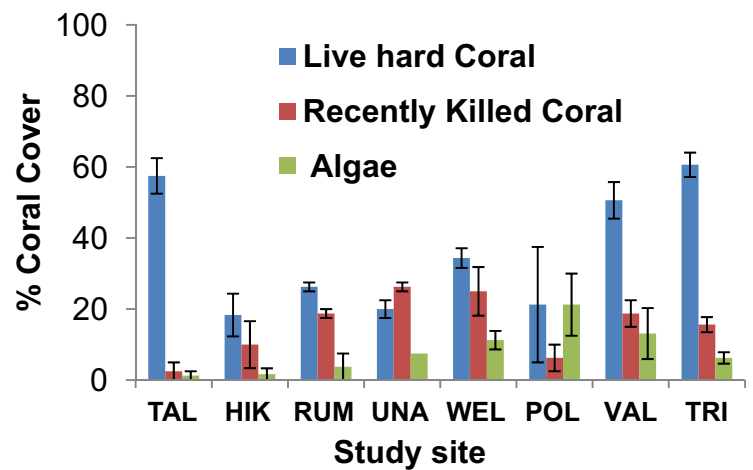


Coral health and Water Chemistry of Sri Lankan Reefs



Land Area	65,525 Sq. Km
Population	20. 6 million
Shore line	1800 Km
Coral Reefs	approx 2% from Shore line
Coral richness	157 Species 58 coral genera

Reef Monitoring

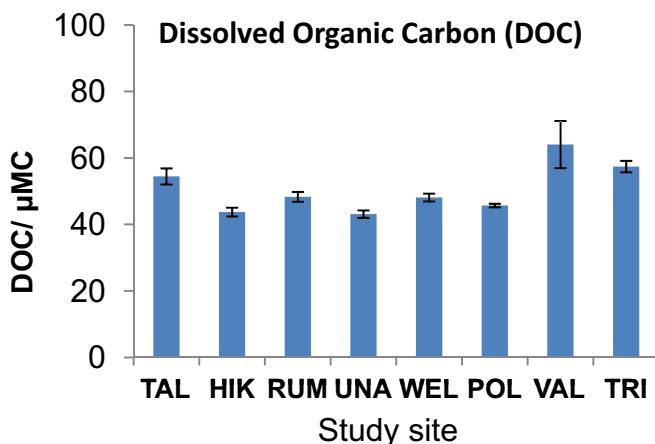


We surveyed 08 reef site around (North-west, South, North-east) Sri Lanka from April 2005 to March 2006. Namely *Thalavila (TAL)*, *Hikkaduwa (HIK)*, *Rumassala (RUM)*, *Unawatuna (UNA)*, *Weligama (WEL)*, *Polhena (POL)*, *Valachchenai (VAL)*, *Trincomalee (TRI)*.

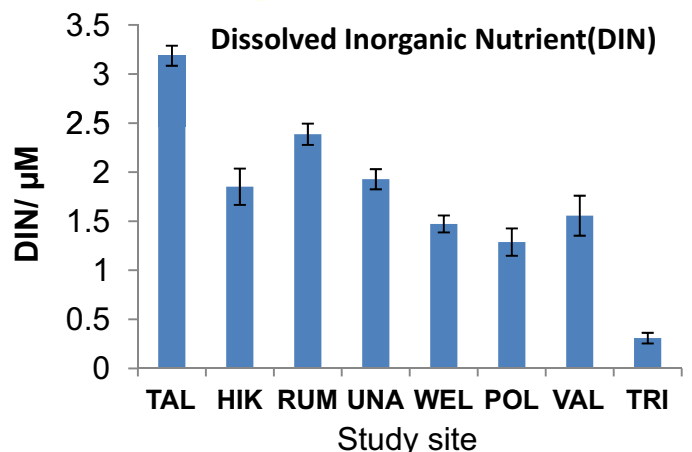
Common Human Activities in the Coastal Zone

- Mining for lime production
- Discharge : Sewage, Oil and other pollutants in connection with shipping and port activities
- Destructive fishing practices
- Land and mangrove destruction
- Tourism, Collection of fauna; fish, shells and corals

The Northern reefs had higher coral and lower algae cover, whereas the Southern Reefs had low coral and higher algae cover



Water Chemistry



M. F. M. Fairoz
fairoz.mfm@gmail.com

